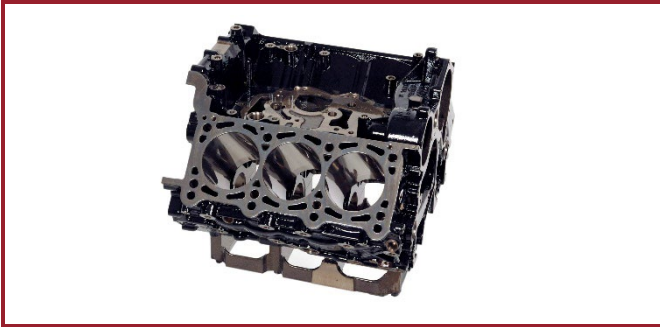


Series Production References – Passenger Vehicles

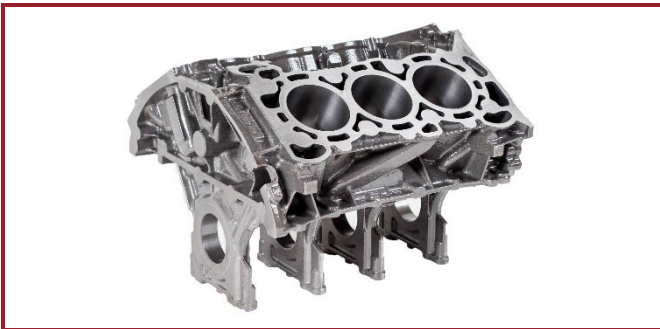
SinterCast supports series production and product development of passenger vehicle cylinder blocks in Europe, Asia and the Americas. SinterCast-CGI engines have been made available in more than 50 vehicles in 18 car brands.



*Audi 3.0 Litre V6
Audi, Porsche and Volkswagen*



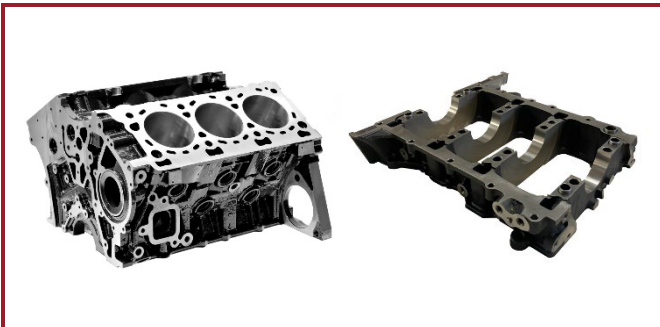
*Cummins 6.7 Litre In-Line 6
Ram Heavy Duty Pick-up Trucks*



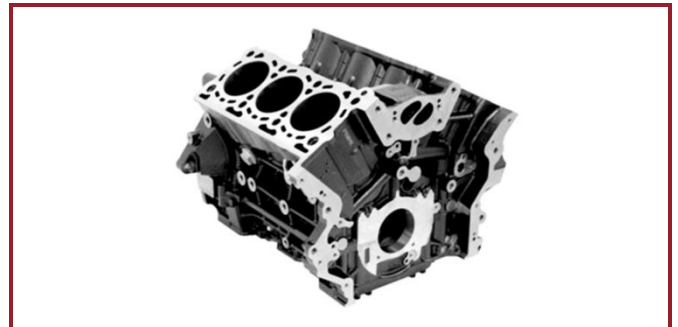
*Ford 2.7 and 3.0 Litre V6 Petrol
Ford and Lincoln*



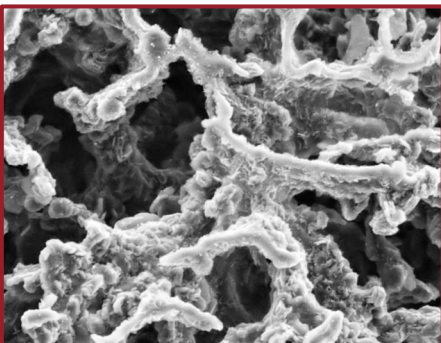
*Ford 6.7 Litre V8
Ford Super Duty Pick-up Trucks*



*Hyundai 3.0 Litre V6 Cylinder Block and Bedplate
Hyundai and Kia*



*VM Motori 3.0 Litre V6 Cylinder Block and Bedplate
Chrysler, Jeep, Lancia, Maserati and Ram*



SinterCast® is the world's leading supplier of process control technology for the reliable high volume production of Compacted Graphite Iron (CGI). The properties of CGI enable improved transport solutions, increasing efficiency and reducing carbon emissions in passenger vehicle, commercial vehicle and industrial power applications. As a specialist supplier of precision measurement and process control solutions to the metals industry, SinterCast also supplies the SinterCast Ladle Tracker® and SinterCast Cast Tracker® technologies, to improve production efficiency and Industry 4.0 traceability in a variety of applications. With 57 installations in 13 countries, SinterCast is a publicly traded company, quoted on the Small Cap segment of the Nasdaq Stockholm stock exchange (SINT).