

## Production References – Installations

*SinterCast provides process control technology for CGI series production, product development and R&D activities. The SinterCast technology is currently used in 57 installations, in 13 countries.*

### Automated System Installations

ASIMCO International, China  
Caterpillar, USA  
Daedong Metals, Korea  
Dashiang Precision (2), China  
Dongfeng, China  
Döktas, Turkey  
Fagor Tafalla, Spain  
FAW Changchun, China  
Federal Mogul, Sweden  
Hyundai Jeonju, Korea  
Impro Mexico, Mexico  
Scania Classic Foundry, Sweden  
Scania New Foundry, Sweden  
SKF Mekan, Sweden  
Tupy Betim, Brazil  
Teksid Monclova, Mexico  
Tupy Joinville Line E0, Brazil  
Tupy Joinville Line C4, Brazil  
Tupy Ramos, Mexico  
Tupy Saltillo Line 3, Mexico  
Tupy Saltillo Line 4, Mexico  
VDP, Italy  
Volvo, Sweden  
Zhongding Power, China

### Mini-System Installations

ASK Chemicals, USA  
Case Western Reserve, USA  
CSIC, China  
Dongfeng, China  
Dongya Technology, China  
Doosan Infracore (2), Korea  
FAW Changchun – Research, China  
FAW Wuxi, China  
Ford Casting Development, USA  
Grainger & Worrall, UK  
Impro China, China  
Jiangling Motors, China  
Jönköping University, Sweden  
Kimura Japan, Japan  
Kimura USA, USA  
Mid-City Foundry, USA  
Shanxi Diesel, China  
Shanxi Sanlian, China  
Tupy Portugal, Portugal  
Toa Koki, Japan  
Total Solutions & Power, Korea  
Undisclosed, Japan  
University of Alabama, USA  
YTO Group, China

### Tracking Technologies

Poitras, Canada (Ladle Tracker)  
Scania Classic, Sweden (Cast Tracker)  
Tupy Joinville, Brazil (Ladle Tracker)  
Tupy Saltillo Line 3, Mexico (Ladle Tracker)  
Tupy Saltillo Line 3, Mexico (Cast Tracker)  
Hyundai, Korea (Ladle Tracker)  
Teksid Monclova, Mexico (Ladle Tracker)



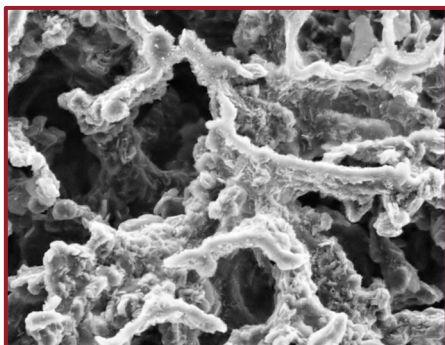
*Automated System 4000  
Fully Automated Series Production*



*Mini-System 4000  
Niche Volume Production, Product  
Development and R&D*



*SinterCast Tracking Technologies*



SinterCast® is the world's leading supplier of process control technology for the reliable high volume production of Compacted Graphite Iron (CGI). The properties of CGI enable improved transport solutions, increasing efficiency and reducing carbon emissions in passenger vehicle, commercial vehicle and industrial power applications. As a specialist supplier of precision measurement and process control solutions to the metals industry, SinterCast also supplies the SinterCast Ladle Tracker® and SinterCast Cast Tracker® technologies, to improve production efficiency and Industry 4.0 traceability in a variety of applications. With 57 installations in 13 countries, SinterCast is a publicly traded company, quoted on the Small Cap segment of the Nasdaq Stockholm stock exchange (SINT).