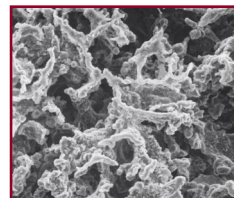
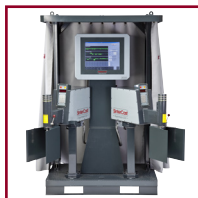


SinterCast

— *Supermetal CGI* —

Compacted Graphite Iron Test Piece Catalogue





Y Block

Article no: 7080007 – S, M, L

Description

Standard Y-Block available in small, medium and large sizes. Conforms to ASTM and DIN standards.

Available sizes	Applicable Standard	Dimensions (mm)				Weight (kg)
		Length	Height	Bottom Width	Top Width	
Small	DIN	175	50 + 50	13	40	2.8
Medium	ASTM A 536	175	75 + 75	25	54	6.6
Large	SinterCast	230	85 + 85	30	85	10.3



Test Cylinder

Article no: 7080011 – S, L

Description

Two different size cylinders for machining (turning) tests. The ID is smaller at the bottom to serve as a feeder.

Available sizes	Dimensions (mm)				Weight (kg)
	OD	ID	Total length	Feeder length	
Small*	118	78	190	55	9.5
Large*	145	98	204	69	16



Prototype Plate

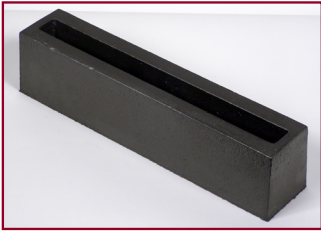
Article no: 7080012 – A2-A7

Description

Six different sizes of flat plates for machining trials (milling, drilling) or for prototype manufacture.

Size	lxwxh (mm)	Weight (kg)	Size	lxwxh (mm)	Weight (kg)
A2	250 x 250 x 15	6.8	A5	250 x 250 x 35	15.8
A3	250 x 250 x 20	9.0	A6	250 x 250 x 50	22.5
A4*	250 x 250 x 25	11.3	A7*	250 x 250 x 70	31.5

All Test Pieces are produced according to ISO 8062-3:2007 DCTG 11 with the exception of those marked with a * which are produced to DCTG 9.



Milling Specimen

Article no: 7080008

Description

Two outer walls and a central gap simulate milling over interrupted surfaces. Holes can be drilled through the base for clamping / mounting.

Overall (lxwxh)

360 x 65 x 80 mm

Side 'legs' (wxh)

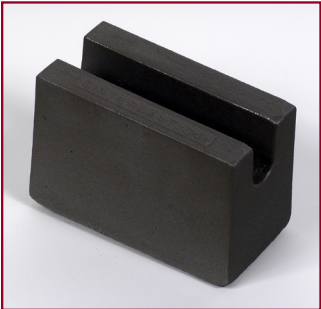
22 x 63 mm

Groove (lxwxh)

335 x 18 x 63 mm

Weight

11.0 kg



Keel Block

Article no: 7080013

Description

Standard Keel Block conforming to the ASTM A-842-83 specification for compacted graphite iron test specimens.

Overall (lxwxh)

152 x 76 x 102 mm

Leg size (lxwxh)

152 x 25 x 38 mm

Weight

8.0 kg



Test Bar 2

Article no: 7080014

Description

Two cylindrical test bars with a large feeder for slow cooling. Conforms to DIN 1693.

Bar Diameter

25 mm

Bar Length

220 mm

Total Weight

0.8 kg

All Test Pieces are produced according to ISO 8062-3:2007 DCTG 11 with the exception of those marked with a * which are produced to DCTG 9.

Head Office

SinterCast Ltd
Kingswick House
Kingswick Drive
Sunninghill Berkshire
SL5 7BH
United Kingdom
Tel: +46 150 794 40

Technical Centre

SinterCast AB (publ)
Kungsgatan 2
641 30 Katrineholm
Sweden
Tel: +46 150 794 40

USA

SinterCast Inc
1755 Park Street
Suite 200
Naperville
IL 60563
USA
Tel: +1 630 778 3466

China

SinterCast Trading (Beijing) Co., Ltd
Room 1131, 11/F, Block A, Gateway
No. 18 Xiaguangli
North Road East Third Ring
Chaoyang District, Beijing 100027
China
Tel: +86 10 5923 1163

Korea

SSinterCast Korea Co., Ltd
Rosavallcity No. 310
HyoJa-Ro 194
WanSan-Gu, JeonJu-City
54969, South Korea
Tel: +82 63 277 1764

SinterCast

— Supermetal CGI —

www.sintercast.com
info@sintercast.com

